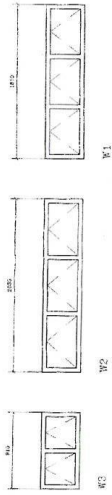


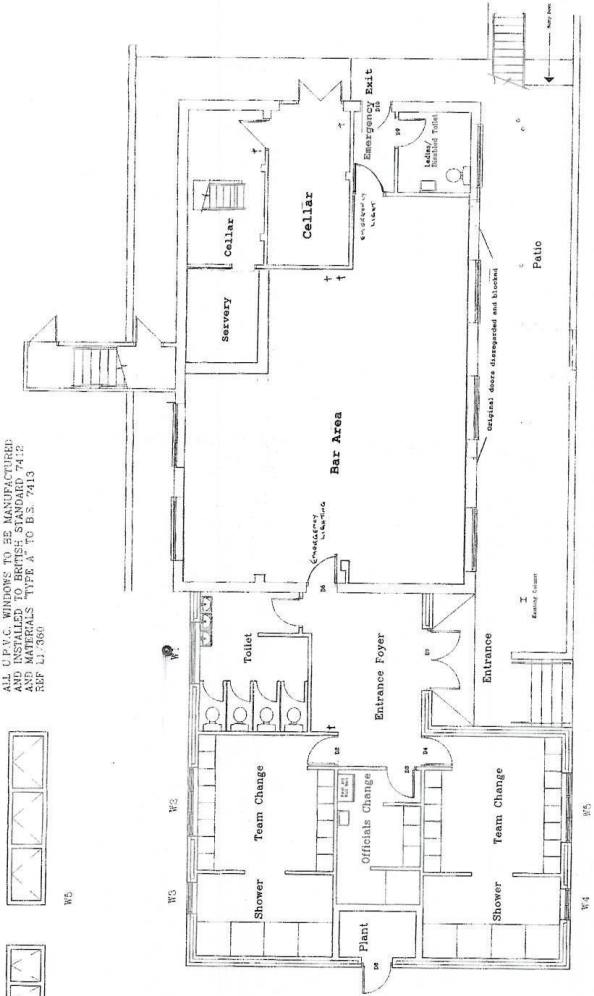
LINTOL TYPE LI/HB 100
 LENGTH 1200mm LONG
 FOR WINDOWS W3 & W4

 LINTOL TYPE LI/HB 100
 LENGTH 2400mm LONG
 FOR WINDOWS W2 & W5

 LINTOL TYPE LI/HB 100
 LENGTH 2140mm LONG
 FOR WINDOWS W1



ALL UPVC WINDOWS TO BE MANUFACTURED
 AND INSTALLED TO BRITISH STANDARD 7412
 USING GLAZING TYPE A TO BS 7413
 REF L1/3850



Plan

Building Regulations Authority Approved New Changing Facilities	
Project No: 0286	Date: A13

